



greenMOBILEgenerator

The greenMOBILEgenerator is a standalone hybrid power system for electrification of areas which are not reached by the grid. It is a compact and modular unit, using solar and wind energy to delivery uninterrupted clean energy. The containerized system has a peak power output of 10 kWp and an average power output of 40 kWh per day in standard version. The output can easily be increased up to 30 kWp by adding additional ground-mounted solar panels.

System components

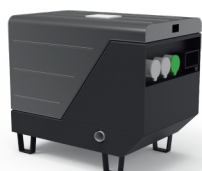


A vertical wind power station can be integrated for additional power supply, especially during nighttime. It has a capacity of 2.0 kWp.

The container can be equipped with a modular energy storage system. The capacity can be increased in steps of 1.2 kWh.



The standard version of the greenMOBILEgenerator is consisting of a 20 ft. ISO container, 10 kWp solar panels, inverters, distribution board incl. monitoring and remote control system, as well as outgoing feeders.



A 5.0 kW diesel generator can be integrated as back-up for crucial applications or for energy generation during nighttime.

Ground-mounted solar panels can increase the maximum power output of the system up to 30 kWp.



System variety

Standard version

- 20 ft. ISO container
- 10 kWp roof-mounted solar system
- Inverters, distribution board and outgoing feeders preinstalled in the container

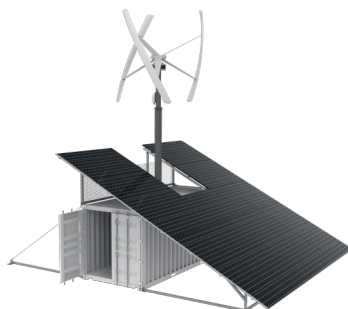
Average daily output: 40 kWh



Hybrid version

- 20 ft. ISO container
- 9.5 kWp roof-mounted solar system
- 2.0 kWp wind power station
- Inverters, distribution board and outgoing feeders preinstalled in the container

Average daily output: 50 kWh



Solar + version

- 20 ft. ISO container
- 10 kWp roof-mounted solar system
- 20 kWp ground-mounted solar system
- Inverters, distribution board and outgoing feeders preinstalled in the container

Average daily output: 120 kWh



Additional options

Battery system

Each of the three versions can be equipped with a modular battery storage system. It is a state of the art LiFePO₄ battery system with a lifetime of more than 8.000 cycles. The capacity of the system can be increased in steps of 1.2 kWh individually and assures a basic supply during nighttime.

Diesel generator

Additionally, each of the three versions can be equipped with a highly efficient 5.0 kW diesel generator set. It is completely integrated and starts automatically when required. In this way it serves as back-up for crucial applications or for energy generation during nighttime.

System advantages



High performance PV system



Patented vertical wind power station



Quick installation



No fuel costs
(without generator)



Easy transportation



No CO₂ emissions
(without generator)

Variety of applications

